

# Welcome to Kansas State University

Copyright @KSRE



Copyright @KSRE



Copyright @KSRE



# K-State College of Agriculture, Agricultural Experiment Station, and Cooperative Extension Service



Dean and Director

Director

Agricultural Experiment Station

Cooperative Extension Service

Dean

College of Agriculture





United States Department of Agriculture  
Cooperative State Research, Education, and Extension Service

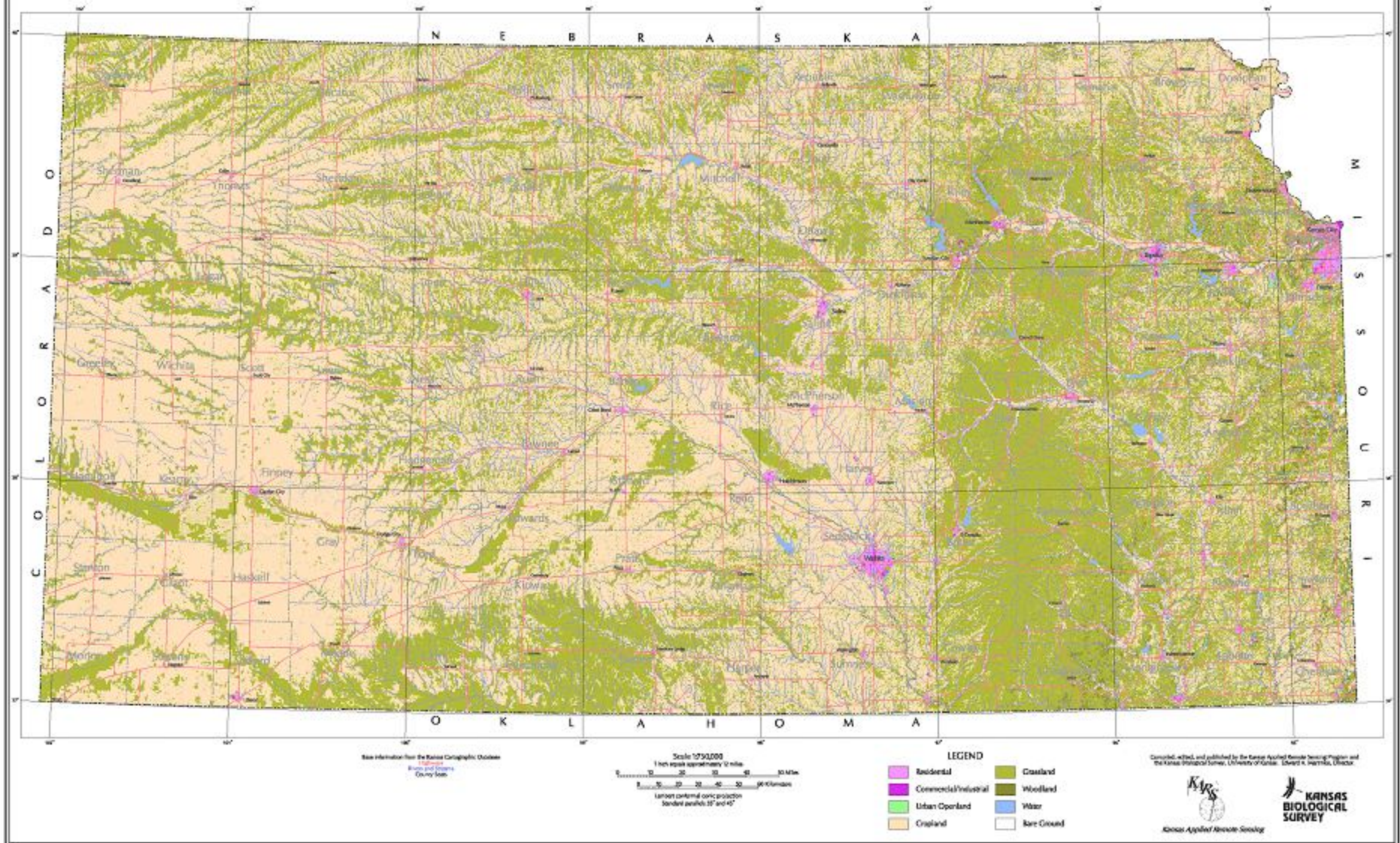
# 1862 Land-Grant Colleges and Universities



# K-State Land Grant History

- 1862-The Morrill Act established institutions in each state that would educate people in agriculture, home economics, mechanical arts, and other professions that were practical at the time.
- 1863-Bluemont College was renamed the Kansas State Agricultural College.

# KANSAS LAND COVER PATTERNS



The land cover classes depicted on this map were digitally derived from Landsat Thematic Mapper imagery acquired during the growing season in 1988, 1989 and 1990. The Landsat satellite is an earth observing satellite that orbits the Earth every 16 days at an altitude of approximately 420 miles. Supplementary base map information is provided for context to enhance map usability. Acquisition of the Landsat data was funded by the Kansas Department of Wildlife and Parks.

Production of the land cover data used in this map was funded by the Kansas State Water Plan through the Kansas Water Office on behalf of the state of Kansas GIS Policy Board. Image processing, classification and cartographic production was performed by the University of Kansas Applied Remote Sensing (KARS) Program. The work was directed by Jerry Whistler and was assisted by Mark Jakubauskas, Stephen Egbert, Edward Martinko, Dave Baumgartner and Re-Yang Lee.

# Agriculture Drives the Kansas Economy

- ~ \$12 B in sales of agricultural commodities in 2007
- ~ Two-thirds livestock, one-third crops
- Wheat, corn, soybeans and sorghum grain rank 2, 3, 4, and 5, respectively

# Kansas' Rank in US Agriculture, 2007

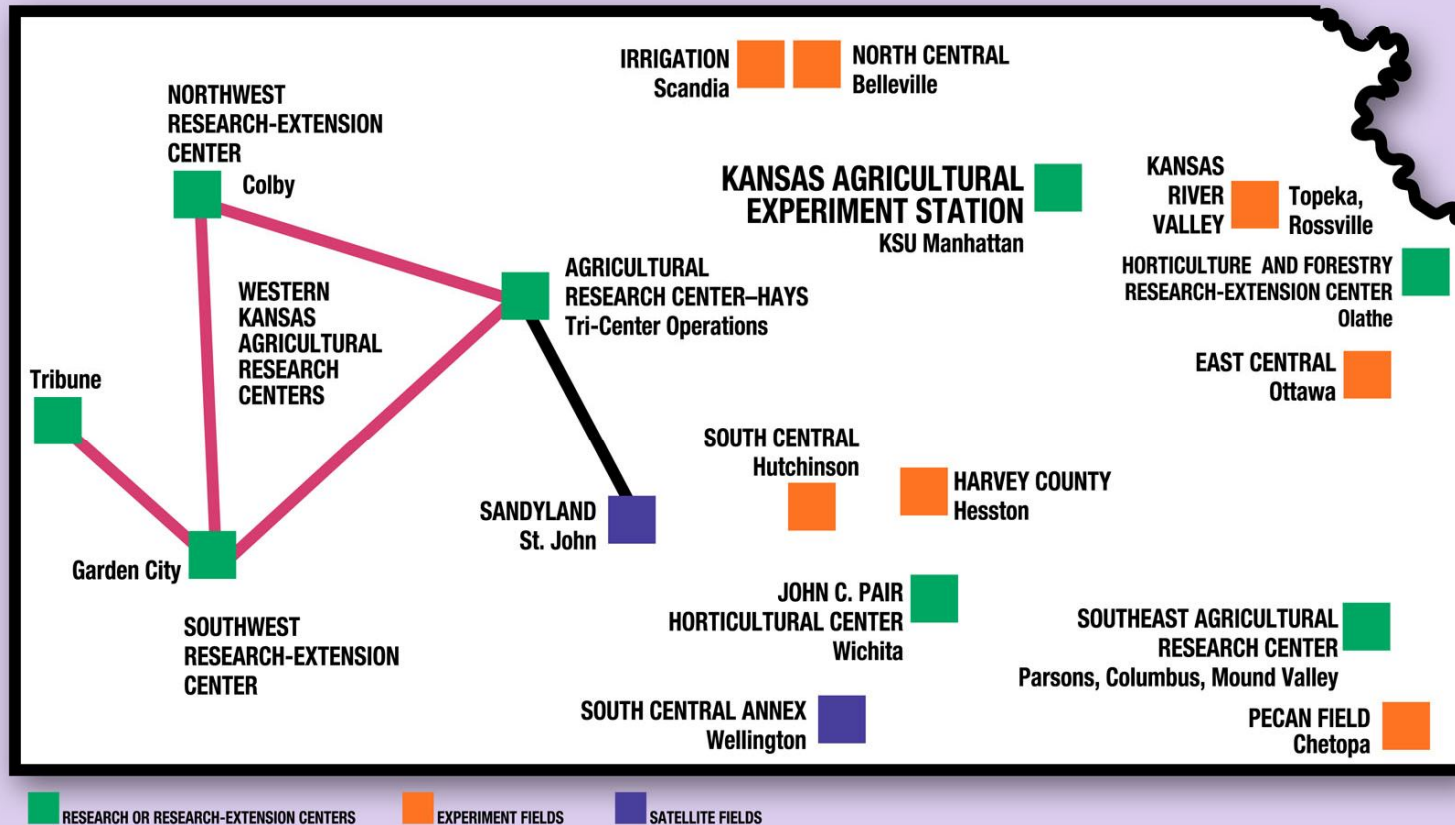
Crop or Livestock Item	Production or Number	Rank	Kansas Number as % of U.S. Total
Wheat Flour Milled .....	34,614,000 cwt.	1	8.3
Wheat Flour Milling Capacity.....	147,130 cwt.	1	9.6
Sorghum Grain Produced.....	212,000,000 bu.	1	42.0
Cattle Slaughtered .....	7,725,900 head	1	22.5
All Wheat Produced.....	283,800,000 bu.	2	13.7
Sorghum Silage Produced.....	1,120,000 tons	2	18.0
Cropland <sup>1/</sup> .....	29,542,022 acres	2	6.8
All Cattle and Calves on Farms, Jan. 1, 2008 .....	6,700,000 head	2	6.9
Cattle and Calves on Grain Feed, Jan. 1, 2008 .....	2,630,000 head	3	18.4
Red Meat Production by Com'l. Slaughter Plants .....	6,224,700,000 lbs.	3	12.8
Land in Farms .....	47,200,000 acres	3	5.1
Commercial Grain Storage Capacity, Dec. 1, 2007 .....	890,000,000 bu.	3	9.8
Sunflowers Produced .....	234,250,000 lbs.	3	8.1
All Other Hay (Excluding Alfalfa) Produced .....	3,570,000 tons	5	4.6
All Summer Potatoes Produced .....	1,789,000 cwt.	5	10.6

# K-State Research and Extension: Agriculture and More

- Faculty supported in five colleges
  - Agriculture
    - Agricultural Economics, Agronomy, Animal Sciences, Communications, Entomology, Food Science, Grain Science, HFRR, Plant Pathology
  - Arts and Sciences
  - Engineering
  - Human Ecology
  - Veterinary Medicine



# KANSAS AGRICULTURAL EXPERIMENT STATION



# K-State Selected as NBAF Site

**NBAF**

**IN KANSAS**

Heartland BioAgro Consortium



# New K-State President

